

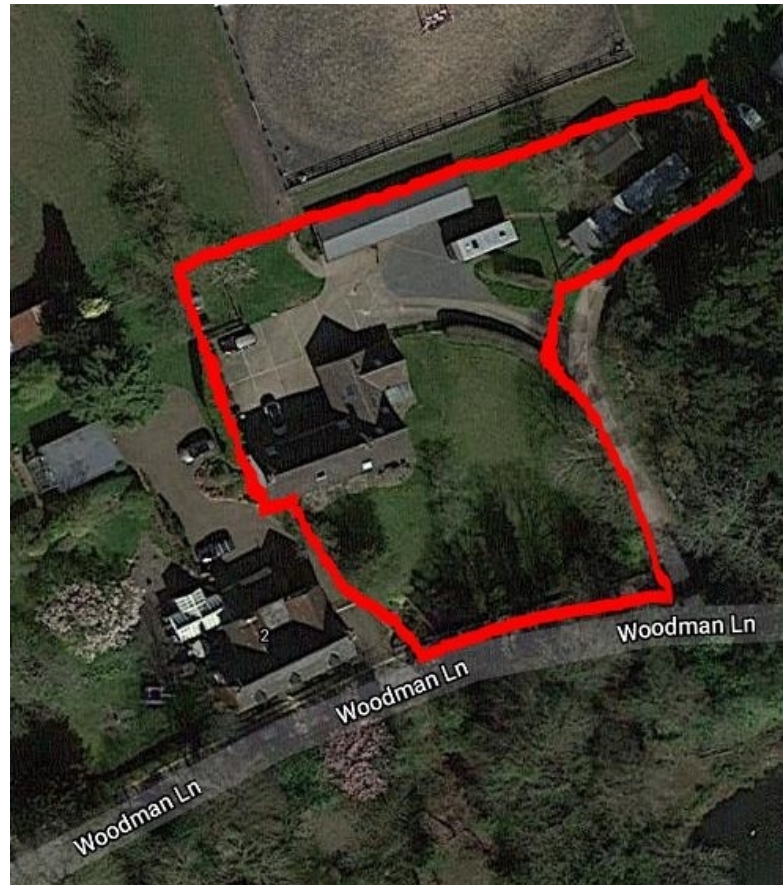
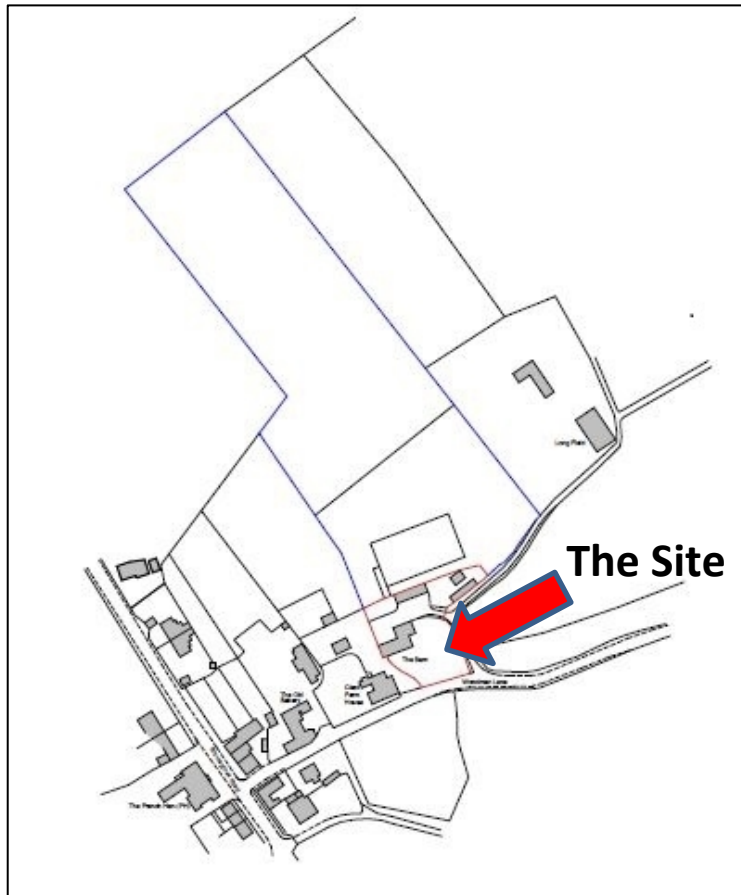
22/01137/S73

The Barn, Woodman Lane, Clent, Worcestershire  
DY9 9PX

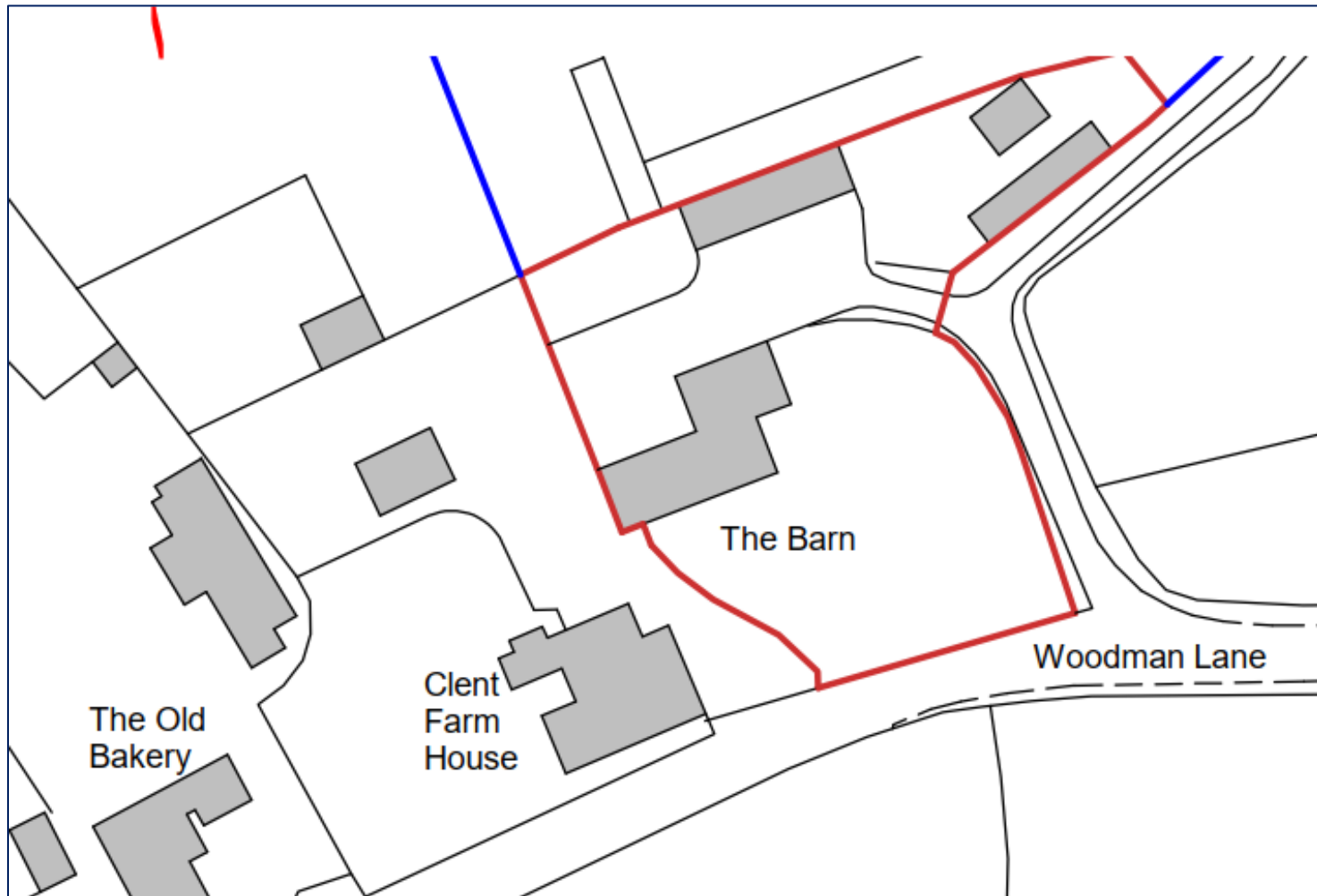
Removal of Condition 3 (Permitted Development Rights) and  
Variation of Condition 6 (Conservation Rooflights) of  
Planning Approval 21/01248/FUL - Single Storey Side Extension

**Recommendation: Refuse Planning Permission**

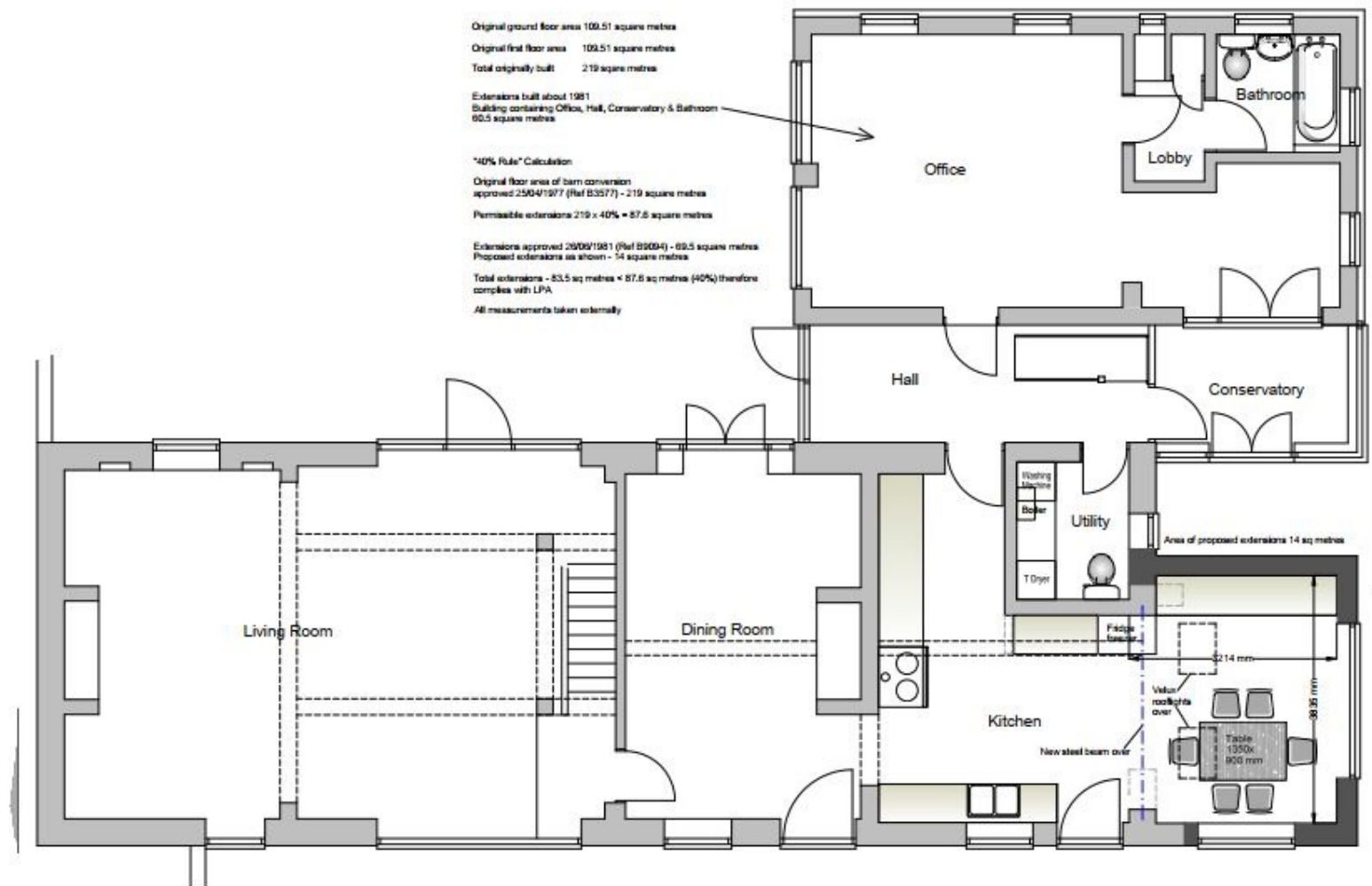
# Location Plan and Aerial View



# Existing Block Plan



# Approved Floor Plan



# Approved Side Elevation Plan



# Approved Rear Elevation Plan



# Site Photos





# Site Photos





# Site Photos



# Site Photos

